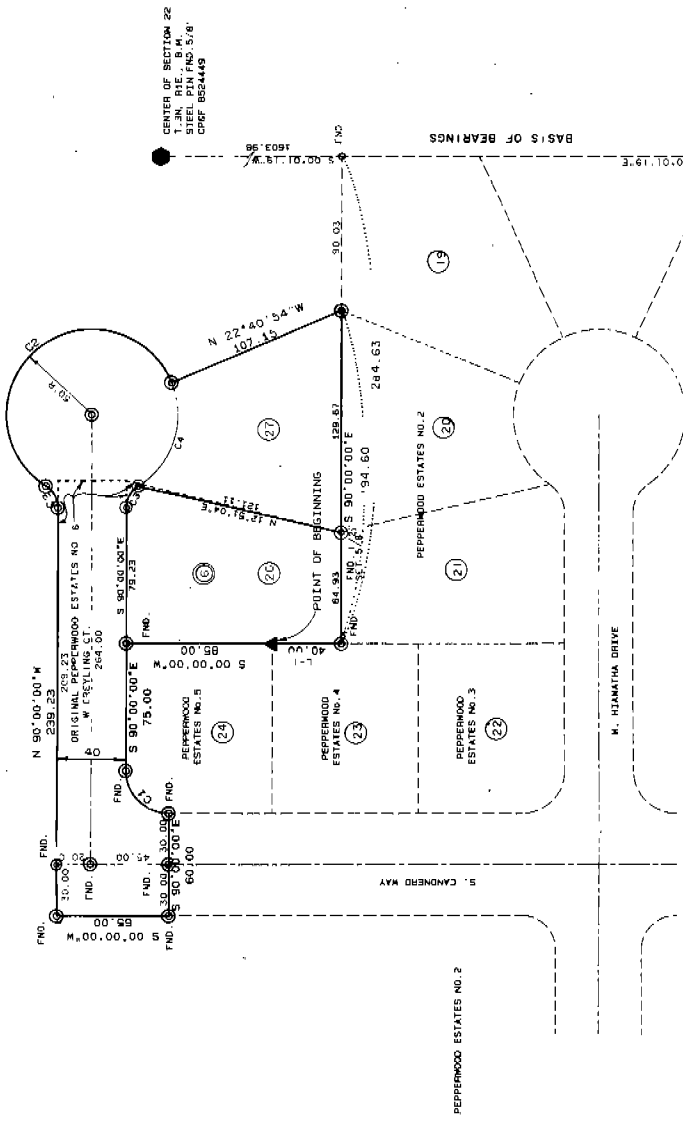


PEPPERWOOD ESTATES NO. 7

A RESUBDIVISION OF PEPPERWOOD ESTATES NO. 6 AND
 A PORTION OF THE SW 1/4 OF SECTION 22 T. 3N., R. 1E., B.M.
 ADA COUNTY, IDAHO COLLINS ENGINEERING 1992



UNPLATTED



LINE	BEARING	DISTANCE	CURVE	DELTA	RADIUS	TANGENT	CHORD	CHORD BRG
1	S 90° 00' 00" W	40.00						
2	N 22° 40' 54" W	107.15						
3	S 90° 00' 00" E	75.00						
4	N 22° 40' 54" W	107.15						

SUPPLEMENTAL CHORD TABLE

CURVE	CHORD BRG
1	S 77° 57' 47" E
2	S 77° 57' 47" E
3	S 77° 57' 47" E
4	S 77° 57' 47" E

- LEGEND** IN T.S.)
- ▲ LAND CORNER
 - 2" x 36" IRON PIPE P.O.B. (INITIAL POINT)
 - 5/8" x 30" PIN - SET UNLESS OTHERWISE NOTED
 - 1/2" x 24" PIN - SET UNLESS OTHERWISE NOTED
 - ① LOT NUMBER
 - ② BLOCK NUMBER

NOTES:

BUILDING SETBACKS
 WITH THE SETBACKS IN THIS SUBDIVISION SHALL BE IN COMPLIANCE
 WITH THE ZONING ORDINANCES IN EFFECT AT THE TIME
 OF BUILDING PERMIT ISSUANCE

EASEMENTS
 SHALL HAVE A 10 FOOT WIDE EASEMENT CONTIGUOUS TO ALL
 STREETS AND PRIVATE LINES FOR UTILITIES AND IRRIGATION
 PURPOSES. SIDE LOT LINES HAVE A 5 FOOT WIDE EASEMENT
 FOR THE INTERMOUNTAIN GAS COMPANY.



SOUTH 1/4 CORNER
 1.3N. R. 1E., B.M.
 BRASS CAP - FND.
 CP# 825448

SANITARY RESTRICTIONS IN
 FORCE: 3/10/92
 DATE

