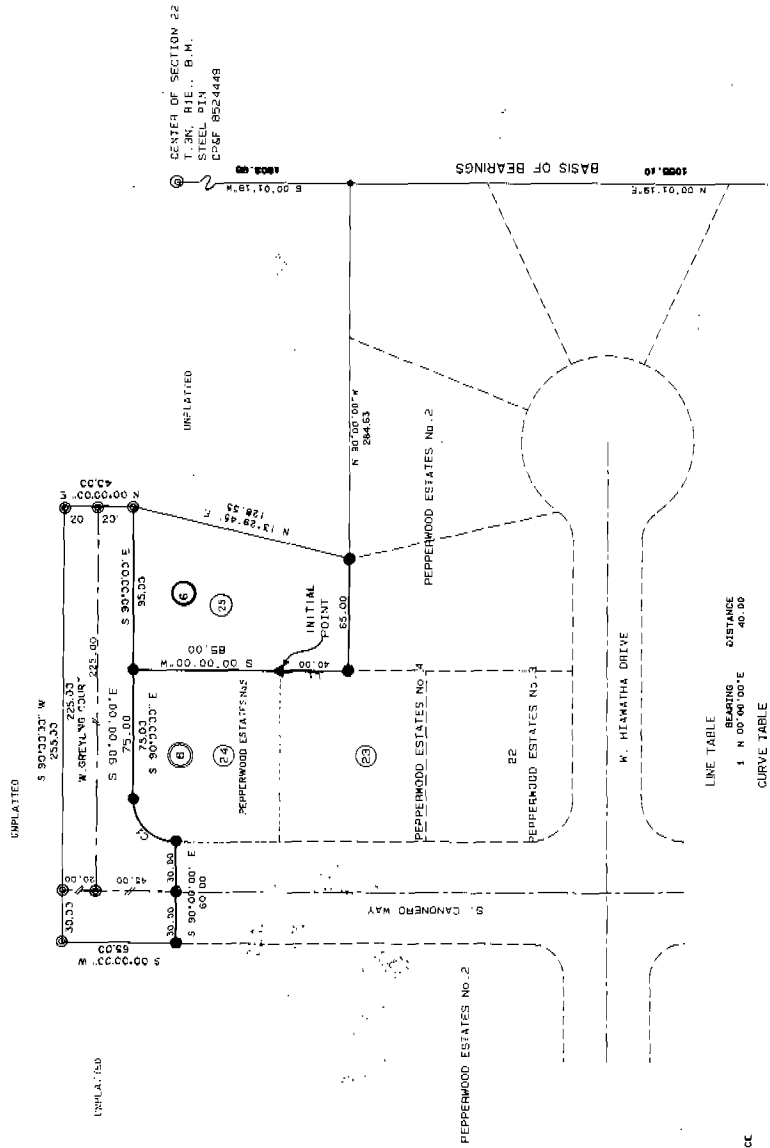


Book 59 Page 5120

PEPPERWOOD ESTATES NO. 6

A PORTION OF THE SW 1/4 OF SECTION 22 T. 3N. R. 1E.
BOISE MERIDIAN, ADA COUNTY, IDAHO 1991
COLLINS ENGINEERING



SOUTH 1/4 CORNER
SECTION 22 T. 3N. R. 1E. B.M.
BRASS CAP
CP&F 8524448

LINE TABLE

BEARING	DISTANCE
1 N 00°00'00"	40.00

CURVE TABLE

CURVE	DELTA	RADIUS	ARC	TANGENT	CHORD	CHORD BRG
1	90°00'00"	25.00	34.27	25.00	35.36	N 45°00'00"E

- LEGEND
- LAND CORNER
 - ▲ 2"X36" PIPE W/ALUM. CAP
 - 5/8" X30" PIN (FOUND-SOLID / SET-OPEN)
 - 1/2" X24" PIN (FOUND-SOLID / SET-OPEN)
 - ① LOT NUMBER
 - ② BLOCK NUMBER

NOTES:

BUILDING SETBACKS
BUILDING SETBACKS IN THIS SUBDIVISION SHALL BE IN COMPLIANCE
WITH THE CITY OF BOISE ORDINANCES IN EFFECT AT THE
TIME OF BUILDING PERMIT ISSUANCE.

EASEMENTS
ALL LOTS HAVE A 5 FOOT WIDE EASEMENT CONTIGUOUS TO ALL STREETS
AND LOTS HAVE A 5 FOOT WIDE EASEMENT TO ALL STREETS
FOR PUBLIC UTILITIES PURPOSES. SIDE LOT LINES HAVE A 5 FOOT WIDE EASEMENT FOR THE
INTERMOUNTAIN GAS COMPANY.

IRRIGATION
THIS PLAT IS SUBJECT TO IERAC CODE 31-3003.

SANITARY RESTRICTIONS IN
FORCE: *Collins Engineering* F.M.S.
DATE: 10/19/91